

# League of Private Property Voters



## 2007 Private Property Congressional Vote Index

February 2008  
Nineteenth Annual Edition

110<sup>th</sup> Congress  
First Session



# The League of Private Property Voters 2007 Private Property Congressional Vote Index

Nineteenth Annual Private Property Congressional Vote Index • February 2007

PO BOX 423 • BATTLE GROUND WA 98604 • PHONE 360-687-2471 • FAX 360-687-2973 • EMAIL [lppv@pacifier.com](mailto:lppv@pacifier.com)

## INTRODUCTION

This is the nineteenth annual edition of the Private Property Congressional Vote Index. The League of Private Property Voters (LPPV) has published the Index each year since 1989.

LPPV is a coalition of more than 800 grassroots organizations that advocate the rights of property owners, including farmers, ranchers, woodlot owners, residents of rural communities, owners of recreational property, and inholders of private property located within and adjacent to federal lands. It also includes cabin permittees, off-road vehicle owners, equestrians, snowmobilers, hunters and recreational shooters, and livestock grazers, foresters and miners who make productive use of federal lands.

Votes for this year's Index were chosen from discussions among approximately twenty five leaders of the Wise Use movement nationwide. These votes represent the most important snapshots demonstrating protection of the constitutional rights of property owners against a powerful and overbearing federal government. They also show support for recreational and commercial access for federal lands, upon which many rural communities depend and all Americans share.

We encourage readers to examine the voting records of their Senators and Members of Congress. Please thank those that stood up for us, and educate the rest.

- The Editors

## CHAMPIONS AND ENEMIES

A CHAMPION of Property Rights is a score of 80% or higher on the LPPV Index.

An ENEMY of Property Rights is a score of 20% or lower on the LPPV Index.

### Senate:

The Senate cast three votes on reducing or repealing the Death Tax, one of which was successful. It was generally middle of the road regarding private property rights and multiple use of public lands. However, Tennessee Senator "Liberal Lamar" Alexander proposed amendments to attack small landowners while protecting his luxury vacation retreat. His efforts were unsuccessful.

There were 30 Champions of Property Rights, all Republicans.

There were 6 Enemies of Property Rights, all Democrats.

### House:

The House was hostile on our issues, voting to vastly increase federal land acquisition, defeat eminent domain protection for property owners and approve new federal zoning schemes.

There were 103 Champions of Property Rights, all Republicans.

There were 208 Enemies of Property Rights, 206 Democrats and Republicans Shays (CT) and Gilcrest (MD).

The **2007 Private Property Congressional Vote Index** is created and published by **The League of Private Property Voters**, PO Box 423, Battle Ground, Washington 98604; phone (360) 687-2471; fax (360) 687-2973; E-mail [lppv@pacifier.com](mailto:lppv@pacifier.com) © 2007 LPPV. Permission is hereby given to reprint this Index, in full or in part, provided credit is given to LPPV. Editors: Chuck Cushman and Mike Hardiman.

# UNITED STATES SENATE

The votes listed on the scorecard show how each Senator supported (+) or opposed (-) the League of Private Property Voters position. A description of each vote is listed below.

You will gain the greatest benefit by first looking up your Senator to see what his or her private property score was on the scorecard. Then read each vote description. The League's private property position listed near the top of the scorecard shows how we believe your Senator should have voted on each issue. Check to see whether your Senator supported (+) or opposed (-) the League's private property position.

## US SENATE VOTES

### **#1 - REDUCETHEDEATHTAX - SenateVote 102 - SCR 21.**

March 23, 2007 - Kyl, R-Ariz., amendment that would eliminate the estate tax, known as the Death Tax, for amounts under \$5 million. Rejected 48-51, R 48-1, D 0-48. **LPPV POSITION: YES**

### **#2 - REPEALTHEDEATHTAX - SenateVote 109 - SCR 21.**

March 23, 2007 - DeMint, R-SC, amendment that would repeal the Death Tax. Rejected 44-55, R 44-5, D 0-48. **LPPV POSITION: YES**

### **#3 - COUNTYPAYMENTS FORTIMBERSALES - Senate Vote 118 - HR 1591.**

March 28, 2007 - Wyden, D-OR, amendment to provide up to \$5 billion in funding over five years for payments to counties with timber sales from national forests. Approved 74-23, R 25-22, D 47-1. **LPPV POSITION: YES**

### **#4 - RESTRICT COUNTYTIMBERPAYMENTS - Senate Vote 119 - HR 1591.**

March 28, 2007 - Burr, R-NC, amendment which would restrict county use of funds from timber sales. Rejected 8-89, R 8-39, D 0-48. **LPPV POSITION: NO**

### **#5 - REDUCETHEDEATHTAX - SenateVote 159 - SCR 21.**

May 9, 2007 - Kyl, R-Ariz., motion to instruct Senate conferees to reduce the top Death Tax rate to 35%, and reduce reporting burden on small business. Approved 54-41, R 46-0, D 8-39. **LPPV POSITION: YES**

### **#6 - OFFSHOREDRILLING, VIRGINIA - Senate Vote 212 - HR 6.**

June 14, 2007 - Warner, R-VA, amendment which would permit Virginia to petition the federal government to allow oil and gas drilling off the coast of Virginia. Defeated 43-44, R 37-5, D 6-37 (60 votes were needed for adoption of this amendment). **LPPV POSITION: YES**

### **#7 - FREEDOM OF SPEECH - SenateVote 258 - HR 2669.**

July 19, 2007 - Coleman, R-Minn., amendment to prevent restoration of the "Fairness Doctrine" which would mandate equal time for leftwing talk radio and television, even though they have little support from listeners. Defeated 49-48, R 48-0, D 1-46 (60 votes were needed for adoption of this amendment). **LPPV POSITION: YES**

### **#8 - INCREASETAXESONPROPERTYOWNERS - Senate Vote 420 - HR 2419.**

December 12, 2007 - Alexander, R-Tenn., amendment which would increase federal taxes on property owners who received payments from utility companies for easements across their property. Senator "Liberal Lamar" Alexander is the Senate's Number One Enemy of Private Property Rights. He has no respect for private property - except his own! (See vote #9) Defeated 19-75, R 19-29, D 0-44. **LPPV POSITION: NO**

### **#9 - PROTECT SENATOR ALEXANDER'S OCEANVIEWPROPERTY - SenateVote 421 - HR 2419.**

December 12, 2007 - Alexander, R-Tenn., amendment which would virtually eliminate tax credits for wind energy equipment such as windmill projects. Liberal Lamar Alexander owns ocean view property on exclusive Nantucket Island off the coast of Massachusetts. An ocean windmill farm is planned near Nantucket, and Alexander wants to stop it because they might be visible from his land. Defeated 14-79, R 14-33, D 0-44. **LPPV POSITION: NO**

### **#10 - PROHIBIT EMINENT DOMAIN - Senate Vote 429 - HR 2419.**

December 13, 2007 - Craig, R-Idaho, amendment to prohibit use of eminent domain in the Farm Bill to seize farmland and convert it into public parks. Defeated 37-58, R 35-13, D 2-43. **LPPV POSITION: YES**

# SENATE SCORECARD

## SENATEKEY

- + Supported Private Property position
- Opposed Private Property position
- X Did not vote (counts as negative)
- I Ineligible to vote at the time

SENATOR	% AGREED ALL VOTES LPPV POSITION:	1	2	3	4	5	6	7	8	9	10
		REDUCE THE DEATH TAX Y	REPEAL THE DEATH TAX Y	COUNTY PAYMENTS FOR TIMBER SALES Y	RESTRICT COUNTY TIMBER PAYMENTS N	REDUCE THE DEATH TAX Y	OFFSHORE DRILLING VIRGINIA Y	FREEDOM OF SPEECH Y	INCREASE TAXES ON PROPERTY OWNERS N	PROTECT SENATOR ALEXANDER'S OCEAN VIEW PROPERTY N	PROHIBIT EMINENT DOMAIN Y
<b>Alabama</b>											
Sessions, J. (R)	50%	+	+	-	+	+	X	+	-	-	-
Shelby (R)	60%	+	+	-	+	+	+	+	-	-	-
<b>Alaska</b>											
Murkowski (R)	100%	+	+	+	+	+	+	+	+	+	+
Stevens (R)	90%	+	-	+	+	+	+	+	+	+	+
<b>Arizona</b>											
Kyl (R)	70%	+	+	-	+	+	+	+	-	-	+
McCain (R)	30%	+	+	X	X	X	X	+	X	X	X
<b>Arkansas</b>											
Lincoln (D)	60%	-	-	+	+	+	+	-	+	+	-
Pryor (D)	60%	-	-	+	+	+	+	-	+	+	-
<b>California</b>											
Boxer (D)	40%	-	-	+	+	-	-	-	+	+	-
Feinstein (D)	40%	-	-	+	+	-	X	-	+	+	-
<b>Colorado</b>											
Allard (R)	90%	+	+	+	+	+	+	+	-	+	+
Salazar, K. (D)	40%	-	-	+	+	-	-	-	+	+	-
<b>Connecticut</b>											
Dodd (D)	20%	-	-	+	+	-	X	-	X	X	X
Lieberman (I)	40%	-	-	+	+	-	-	-	+	+	-
<b>Delaware</b>											
Biden (D)	20%	-	-	+	+	-	-	-	X	X	X
Carper (D)	40%	-	-	-	+	-	+	-	+	+	-
<b>Florida</b>											
Martinez (R)	60%	+	+	-	-	+	-	+	+	+	-
Nelson, Bill (D)	40%	-	-	+	+	-	-	-	+	+	-
<b>Georgia</b>											
Chambliss (R)	90%	+	+	+	+	+	+	+	+	+	-
Isakson (R)	100%	+	+	+	+	+	+	+	+	+	+
<b>Hawaii</b>											
Akaka (D)	40%	-	-	+	+	-	-	-	+	+	-
Inouye (D)	40%	-	-	+	+	-	-	-	+	+	-
<b>Idaho</b>											
Craig (R)	100%	+	+	+	+	+	+	+	+	+	+
Crapo (R)	90%	+	+	+	+	X	+	+	+	+	+
<b>Illinois</b>											
Durbin (D)	40%	-	-	+	+	-	-	-	+	+	-
Obama (D)	20%	-	-	+	+	-	X	X	X	X	X

**PRIVATE PROPERTY CONGRESSIONAL VOTE INDEX**

**SENATEKEY**  
 + Supported Private Property position  
 - Opposed Private Property position  
 X Did not vote (counts as negative)  
 I Ineligible to vote at the time

SENATOR	% AGREED ALL VOTES LPPV POSITION:	1	2	3	4	5	6	7	8	9	10
		REDUCE THE DEATH TAX Y	REPEAL THE DEATH TAX Y	COUNTY PAYMENTS FOR TIMBER SALES Y	RESTRICT COUNTY TIMBER PAYMENTS N	REDUCE THE DEATH TAX Y	OFFSHORE DRILLING VIRGINIA Y	FREEDOM OF SPEECH Y	INCREASE TAXES ON PROPERTY OWNERS N	PROTECT SENATOR ALEXANDER'S OCEAN VIEW PROPERTY N	PROHIBIT EMINENT DOMAIN Y
<b>Indiana</b>											
Bayh (D)	60%	-	-	+	+	+	-	+	+	+	-
Lugar (R)	100%	+	+	+	+	+	+	+	+	+	+
<b>Iowa</b>											
Grassley (R)	90%	+	+	-	+	+	+	+	+	+	+
Harkin (D)	40%	-	-	+	+	-	-	-	+	+	-
<b>Kansas</b>											
Brownback (R)	80%	+	+	-	+	+	+	X	+	+	+
Roberts (R)	80%	+	+	-	+	+	X	+	+	+	+
<b>Kentucky</b>											
Bunning (R)	60%	+	+	-	-	+	+	+	-	-	+
McConnell (R)	70%	+	+	+	-	+	+	+	-	-	+
<b>Louisiana</b>											
Landrieu (D)	60%	-	-	+	+	+	+	-	+	+	-
Vitter (R)	80%	+	+	-	+	X	+	+	+	+	+
<b>Maine</b>											
Collins (R)	60%	+	-	-	+	+	-	+	+	+	-
Snowe (R)	60%	+	-	-	+	+	-	+	-	+	+
<b>Maryland</b>											
Cardin (D)	40%	-	-	+	+	-	-	-	+	+	-
Mikulski (D)	40%	-	-	+	+	-	-	-	+	+	-
<b>Massachusetts</b>											
Kennedy, E. (D)	40%	-	-	+	+	-	-	-	+	+	-
Kerry (D)	40%	-	-	+	+	-	-	-	+	+	-
<b>Michigan</b>											
Levin, C. (D)	40%	-	-	+	+	-	X	-	+	+	-
Stabenow (D)	40%	-	-	+	+	-	-	-	+	+	-
<b>Minnesota</b>											
Coleman (R)	90%	+	+	+	+	+	X	+	+	+	+
Klobuchar (D)	40%	-	-	+	+	-	-	-	+	+	-
<b>Mississippi</b>											
Cochran (R)	80%	+	+	+	+	+	+	+	-	-	+
Lott (R)	90%	+	+	+	+	+	+	+	+	-	+
Wicker (R)	0%	I	I	I	I	I	I	I	I	I	I
<b>Missouri</b>											
Bond (R)	70%	+	+	-	+	+	+	+	-	-	+
McCaskill (D)	40%	-	-	+	+	-	-	-	+	+	-

**PRIVATE PROPERTY CONGRESSIONAL VOTE INDEX**

**SENATEKEY**  
 + Supported Private Property position  
 - Opposed Private Property position  
 X Did not vote (counts as negative)  
 I Ineligible to vote at the time

SENATOR	% AGREED ALL VOTES LPPV POSITION:	1	2	3	4	5	6	7	8	9	10
		Y	Y	Y	N	Y	Y	Y	N	N	Y
		REDUCE THE DEATH TAX	REPEAL THE DEATH TAX	COUNTY PAYMENTS FOR TIMBER SALES	RESTRICT COUNTY TIMBER PAYMENTS	REDUCE THE DEATH TAX	OFFSHORE DRILLING VIRGINIA	FREEDOM OF SPEECH	INCREASE TAXES ON PROPERTY OWNERS	PROTECT SENATOR ALEXANDER'S OCEAN VIEW PROPERTY	PROHIBIT EMINENT DOMAIN
<b>Montana</b>											
Baucus, M. (D)	60%	-	-	+	+	+	-	-	+	+	+
Tester (D)	60%	-	-	+	+	+	-	-	+	+	+
<b>Nebraska</b>											
Hagel (R)	80%	+	+	-	+	+	+	+	+	+	-
Nelson, Ben (D)	60%	-	-	+	+	+	+	-	+	+	-
<b>Nevada</b>											
Ensign (R)	90%	+	+	+	+	+	X	+	+	+	+
Reid, H. (D)	40%	-	-	+	+	-	-	-	+	+	-
<b>New Hampshire</b>											
Gregg (R)	70%	+	+	-	-	+	+	+	+	+	-
Sununu (R)	90%	+	+	+	+	+	+	+	-	+	+
<b>New Jersey</b>											
Lautenberg (D)	40%	-	-	+	+	-	-	-	+	+	-
Menendez (D)	20%	-	-	+	+	-	-	-	X	X	-
<b>New Mexico</b>											
Bingaman (D)	40%	-	-	+	+	-	-	-	+	+	-
Domenici (R)	90%	+	+	+	+	+	+	+	+	-	+
<b>New York</b>											
Clinton (D)	20%	-	-	+	+	-	X	-	X	X	X
Schumer (D)	40%	-	-	+	+	-	-	-	+	+	-
<b>North Carolina</b>											
Burr (R)	70%	+	+	+	-	+	+	+	-	X	+
Dole (R)	60%	+	+	+	-	+	-	+	-	-	+
<b>North Dakota</b>											
Conrad (D)	40%	-	-	+	+	-	-	-	+	+	-
Dorgan (D)	40%	-	-	+	+	-	-	-	+	+	-
<b>Ohio</b>											
Brown, S. (D)	40%	-	-	+	+	-	-	-	+	+	-
Voinovich (R)	50%	-	-	-	+	+	+	+	-	+	-
<b>Oklahoma</b>											
Coburn (R)	70%	+	+	-	-	+	X	+	+	+	+
Inhofe (R)	90%	+	+	-	+	+	+	+	+	+	+
<b>Oregon</b>											
Smith, G. (R)	80%	+	+	+	+	+	-	+	+	+	-
Wyden (D)	40%	-	-	+	+	-	-	-	+	+	-
<b>Pennsylvania</b>											
Casey (D)	40%	-	-	+	+	-	-	-	+	+	-
Specter (R)	80%	+	+	+	+	+	+	+	-	+	-

**PRIVATE PROPERTY CONGRESSIONAL VOTE INDEX**

SENATEKEY	
+	Supported Private Property position
-	Opposed Private Property position
X	Did not vote (counts as negative)
I	Ineligible to vote at the time

SENATOR	% AGREED ALL VOTES LPPV POSITION:	1	2	3	4	5	6	7	8	9	10
		REDUCE THE DEATH TAX Y	REPEAL THE DEATH TAX Y	COUNTY PAYMENTS FOR TIMBER SALES Y	RESTRICT COUNTY TIMBER PAYMENTS N	REDUCE THE DEATH TAX Y	OFFSHORE DRILLING VIRGINIA Y	FREEDOM OF SPEECH Y	INCREASE TAXES ON PROPERTY OWNERS N	PROTECT SENATOR ALEXANDER'S OCEAN VIEW PROPERTY N	PROHIBIT EMINENT DOMAIN Y
<b>Rhode Island</b>											
Reed, J. (D)	40%	-	-	+	+	-	-	-	+	+	-
Whitehouse (D)	40%	-	-	+	+	-	-	-	+	+	-
<b>South Carolina</b>											
DeMint (R)	80%	+	+	-	+	+	+	+	+	-	+
Graham (R)	80%	+	+	-	+	+	+	+	-	+	+
<b>South Dakota</b>											
Johnson, Tim (D)	20%	X	X	X	X	X	X	X	+	+	-
Thune (R)	90%	+	+	-	+	+	+	+	+	+	+
<b>Tennessee</b>											
Alexander, L. (R)	60%	+	+	+	-	+	+	+	-	-	-
Corker (R)	100%	+	+	+	+	+	+	+	+	+	+
<b>Texas</b>											
Cornyn (R)	90%	+	+	-	+	+	+	+	+	+	+
Hutchison (R)	90%	+	+	+	+	+	+	+	-	+	+
<b>Utah</b>											
Bennett (R)	70%	+	+	+	+	+	+	+	-	-	-
Hatch (R)	100%	+	+	+	+	+	+	+	+	+	+
<b>Vermont</b>											
Leahy (D)	50%	-	-	+	+	+	-	-	+	+	-
Sanders (I)	40%	-	-	+	+	-	-	-	+	+	-
<b>Virginia</b>											
Warner (R)	60%	+	-	+	+	+	+	+	-	-	-
Webb (D)	50%	-	-	+	+	-	+	-	+	+	-
<b>Washington</b>											
Cantwell (D)	40%	-	-	+	+	-	-	-	+	+	-
Murray (D)	40%	-	-	+	+	-	-	-	+	+	-
<b>West Virginia</b>											
Byrd (D)	40%	-	-	+	+	-	-	-	+	+	-
Rockefeller (D)	40%	-	-	+	+	X	-	-	+	+	-
<b>Wisconsin</b>											
Feingold (D)	40%	-	-	+	+	-	-	-	+	+	-
Kohl (D)	40%	-	-	+	+	-	-	-	+	+	-
<b>Wyoming</b>											
Barrasso (R)	100%	I	I	I	I	I	I	+	+	+	+
Enzi (R)	80%	+	+	X	X	+	+	+	+	+	+
Thomas (R)	80%	+	+	-	+	+	I	I	I	I	I

The League of Private Property Voters  
Recognizes  
Representative  
Wally Berger

as a

Champion

of Private Property Rights

In recognition of achieving 100% on the 2007  
Private Property Congressional Vote Index



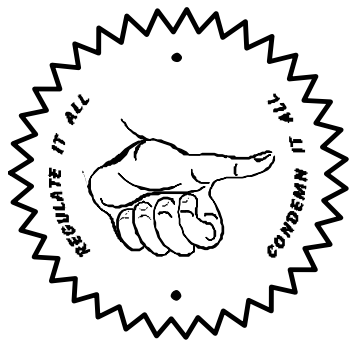
Charles S. Cashman, Chairman



# The League of Private Property Owners declares SENATOR JOHN LIBERTY

## LIBERTY AS AN ENEMY OF PRIVATE PROPERTY RIGHTS

FOR ATTACKING PROPERTY RIGHTS  
ON THE 2007 PRIVATE PROPERTY  
CONGRESSIONAL VOTE INDEX



*Chuck Cushman*  
Chuck Cushman, Chairman

# UNITED STATES HOUSE OF REPRESENTATIVES

The votes listed below show how each Representative supported (+) or opposed (-) the League of Private Property Voters position. A description of each vote is listed below.

You will gain the greatest benefit by first looking up your Representative to see what his or her private property score was on the scorecard. Then read each vote description. The League's private property position listed near the top of the scorecard shows how we believe your Representative should have voted on each issue. Check to see whether your Representative supported (+) or opposed (-) the League's private property position.

## US HOUSE VOTES

### **#1 - ANIMAL RIGHTS - House Vote 269 - HR 249.**

April 26, 2007 - Rahall, D-WV, Passage of bill that would prohibit the Bureau of Land Management from managing the population of wild horses, placing the rights of animals above the protection of people. Passed 277-137, R 82-113, D 195-24. **LPPV POSITION: NO**

### **#2 - OREGON/WASHINGTON STATE LAND GRAB - House Vote 302 - HR 407.**

May 7, 2007 - Grijalva, D-AZ, motion to suspend rules and pass of bill to conduct a study of the Columbia River Basin to impose federal zoning and land acquisition, known as a "HeritageArea." Approved 294-80, R 95-80, D 199-0. **LPPV POSITION: NO**

### **#3 - PROHIBIT EMINENT DOMAIN - House Vote 408 - HR 1100.**

May 23, 2007 - Pearce, R-NM, motion to prohibit the use of eminent domain in the creation of a historic site. Defeated 192-228, R 192-3, D 0-225. **LPPV POSITION: YES**

### **#4 - ALLOW OFFSHORE DRILLING - House Vote 552 - HR 2643.**

June 26, 2007 - Peterson, R-PA, amendment that would permit the issuance of new leases for offshore natural gas development 25 miles or

more from the U.S. coastline. Defeated 196-223, R 158-39, D 38-194. **LPPV POSITION: YES**

### **#5 - PROHIBIT RESERVATION SHOPPING FOR GAMBLING - House Vote 557 - HR 2643.**

June 26, 2007 - Dent, R-PA, amendment that would prohibit Indian tribes from the practice of "Reservation Shopping," which is claiming new tribal lands and then constructing gambling facilities on them. Defeated 194-236, R 170-27, D 24-209. **LPPV POSITION: YES**

### **#6 - PROTECT RANCHERS FROM WOLF PACKS - House Vote 558 - HR 2643.**

June 26, 2007 - Pearce, R-NM, amendment that would prohibit funding for the Mexican Wolf Recovery Program, because of the threat of wolves to livestock and people. Defeated 172-258, R 159-38, D 12-220. **LPPV POSITION: YES**

### **#7 - STOP TIMBER HARVEST, INCREASE UNEMPLOYMENT - House Vote 563 - HR 2643.**

June 26, 2007 - Andrews, D-NJ, amendment that would prohibit timber harvesting in the Tongass National Forest in Alaska. Approved 283-145, R 72-125, D 211-20. **LPPV POSITION: NO**

**#8 - MASSIVE LAND ACQUISITION FUNDING - House Vote 579 - HR 2643.**

June 27, 2007 - Dicks, D-WA, passage of bill increasing funding for federal land acquisition. Approved 272-155, R 48-150, D 224-5. **LPPV POSITION: NO.**

**#9 - FREEDOM OF SPEECH - House Vote 599 - HR 2829.**

June 28, 2007 - Pence, R-IN, amendment to prevent restoration of the "Fairness Doctrine" which would mandate equal time for leftwing talk radio and television, even though they have little support from listeners. Approved 309-115, R 196-0, D 113-115. **LPPV POSITION: YES**

**#10 - PROHIBIT EMINENT DOMAIN - House Vote 766 - HR 986.**

July 31, 2007 - Pearce, R-NM, motion to prohibit

the use of eminent domain in the establishment of a federal scenic river designation. Defeated 200-225, R 191-5, D 9-220. **LPPV POSITION: YES**

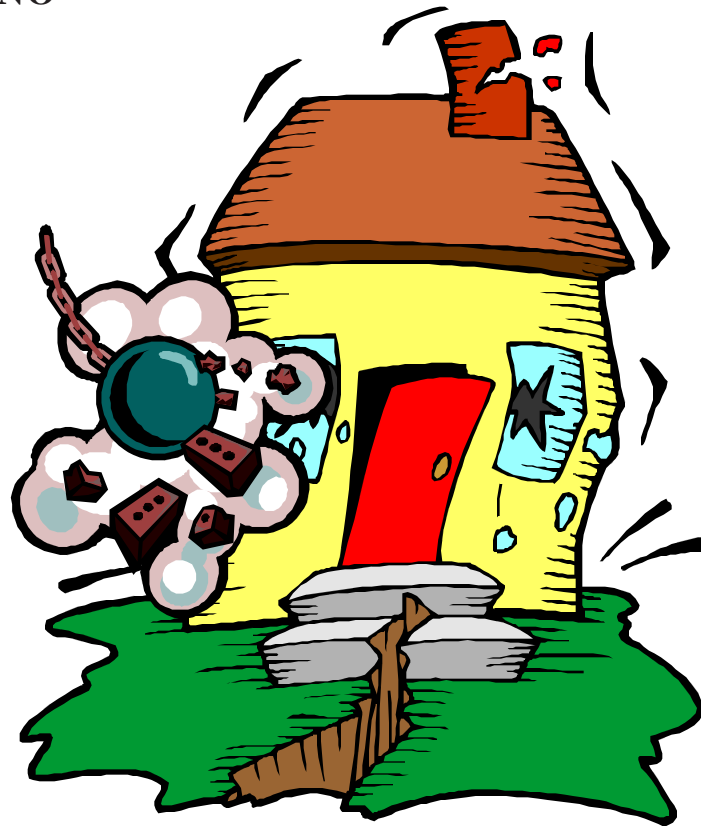
**#11 - FEDERAL ZONING "HERITAGE AREAS" - House Vote 996 - HR 1483.**

October 24, 2007 - Regula, R-OH, passage of bill that provides funding for nine existing and six new federal zoning areas known as "Heritage Areas." Passed 291-122, R 69-122, D 222-0. **LPPV POSITION: NO**

**#12 - DAMAGE THE MINING BUSINESS - House Vote 1033 - HR 2262.**

November 1, 2007 - Rahall, D-WV, passage of bill to increase royalties and regulations on mining and restrict areas where mining can occur. Passed 244-166, R 24-163, D 220-3. **LPPV POSITION: NO**

**Eminent Domain:  
Incentive to  
become a  
willing seller!**



# HOUSE SCORECARD

## HOUSE KEY

+ Supported Private Property position  
 - Opposed Private Property position  
 X Did not vote (counts as negative)  
 I Ineligible to vote at the time

REPRESENTATIVE	% AGREED ALL VOTES LPPV POSITION:	ANIMAL RIGHTS	OREGON WASHINGTON STATE LAND GRAB	PROHIBIT EMINENT DOMAIN	ALLOW OFFSHORE DRILLING	PROHIBIT RESERVATION SHOPPING FOR GAMBLING	PROTECT RANCHERS FROM WOLF PACKS	STOP TIMBER HARVEST INCREASE UNEMPLOYMENT	MASSIVE LAND ACQUISITION FUNDING	FREEDOM OF SPEECH	PROHIBIT EMINENT DOMAIN	FEDERAL ZONING "HERITAGE AREAS"	DAMAGE THEMING BUSINESS
		1 N	2 N	3 Y	4 Y	5 Y	6 Y	7 N	8 N	9 Y	10 Y	11 N	12 N
<b>Alabama</b>													
4 Aderholt (R )	75%	-	-	+	+	+	+	+	-	+	+	+	+
6 Bachus, S. (R )	67%	+	-	+	+	+	+	-	+	+	+	-	X
1 Bonner (R )	75%	+	+	+	-	+	+	-	+	+	+	-	+
5 Cramer (D )	25%	+	-	-	+	-	-	-	-	+	-	-	-
7 Davis, A. (D )	8%	-	-	-	-	-	-	-	-	+	-	-	-
2 Everett (R )	83%	-	+	+	+	+	-	+	+	+	+	+	+
3 Rogers, Mike D. (R )	67%	+	+	+	-	+	+	X	-	+	+	-	+
<b>Alaska</b>													
AL Young, D. (R )	83%	+	+	+	+	-	+	+	+	+	+	X	+
<b>Arizona</b>													
6 Flake (R )	92%	+	+	+	+	+	+	-	+	+	+	+	+
2 Franks, T. (R )	100%	+	+	+	+	+	+	+	+	+	+	+	+
8 Giffords (D )	8%	-	-	-	-	-	-	-	-	+	-	-	-
7 Grijalva (D )	0%	-	-	-	-	-	-	-	-	-	-	-	-
5 Mitchell (D )	8%	-	-	-	-	-	-	-	-	+	-	-	-
4 Pastor (D )	0%	-	-	-	-	-	-	-	-	-	-	-	-
1 Renzi (R )	75%	+	-	+	+	-	+	+	-	+	+	+	+
3 Shadegg (R )	92%	+	+	+	+	+	+	+	+	+	+	+	X
<b>Arkansas</b>													
1 Berry (D )	17%	-	-	-	-	-	+	+	-	-	-	-	-
3 Boozman (R )	75%	-	-	+	+	+	+	+	-	+	+	+	+
4 Ross (D )	33%	-	-	-	+	-	+	+	-	+	-	X	-
2 Snyder (D )	8%	-	-	-	-	-	-	-	-	+	-	X	-
<b>California</b>													
43 Baca (D )	8%	-	-	-	-	-	-	-	-	+	-	-	-
31 Becerra (D )	0%	-	-	-	-	-	-	-	-	-	-	-	-
28 Berman (D )	8%	-	-	-	-	-	-	-	-	+	-	-	-
50 Bilbray (R )	67%	-	+	+	-	+	+	-	+	+	+	X	+
45 Bono Mack (R )	50%	-	-	+	-	-	+	+	-	+	+	+	+
44 Calvert (R )	75%	-	-	+	+	-	+	+	+	+	+	+	+
48 Campbell (R )	75%	-	+	+	-	+	+	-	+	+	+	+	+
23 Capps (D )	0%	-	-	-	-	-	-	-	-	-	-	-	-
18 Cardoza (D )	33%	+	-	-	-	-	+	-	+	+	-	-	X
20 Costa (D )	33%	+	-	-	-	-	+	+	-	+	-	-	-
53 Davis, S. (D )	0%	-	-	-	-	-	-	-	-	-	-	X	-
4 Doolittle (R )	92%	+	X	+	+	+	+	+	+	+	+	+	+
26 Dreier (R )	67%	-	X	+	-	-	+	+	+	+	+	+	+
14 Eshoo (D )	0%	-	-	-	-	-	-	-	-	-	-	-	-
17 Farr (D )	0%	-	-	-	-	-	-	-	-	-	-	-	-
51 Filner (D )	0%	-	-	-	-	-	-	-	-	-	-	-	-
24 Gallegly (R )	83%	-	+	+	-	+	+	+	+	+	+	+	+
36 Harman (D )	0%	X	-	-	-	-	-	-	-	-	-	-	-
2 Herger (R )	100%	+	+	+	+	+	+	+	+	+	+	+	+
15 Honda (D )	0%	-	-	-	-	-	-	-	-	-	-	-	-
52 Hunter (R )	75%	+	X	X	+	+	+	+	+	+	+	X	+
49 Issa (R )	75%	-	+	+	+	-	+	+	+	+	+	X	+
12 Lantos (D )	8%	-	X	-	-	-	-	-	-	+	-	-	-
9 Lee (D )	0%	-	-	-	-	-	-	-	-	-	-	-	-
41 Lewis, Jerry (R )	83%	+	+	+	+	+	-	+	+	+	+	X	+
16 Lofgren (D )	8%	-	-	-	-	+	-	-	-	-	-	-	-
3 Lungren (R )	83%	+	-	+	+	-	+	+	+	+	+	+	+
5 Matsui (D )	0%	-	-	-	-	-	-	-	-	-	-	-	-
22 McCarthy, K. (R )	92%	+	+	+	+	+	+	+	+	+	+	+	+
25 McKeon (R )	92%	+	-	+	+	+	+	+	+	+	+	+	+
11 McNerney (D )	8%	-	-	-	-	-	-	-	-	+	-	-	-

**PRIVATE PROPERTY CONGRESSIONAL VOTE INDEXX**

**HOUSE KEY**  
 + Supported Private Property position  
 - Opposed Private Property position  
 X Did not vote (counts as negative)  
 I Ineligible to vote at the time

REPRESENTATIVE	% AGREED ALL VOTES LPPV POSITION:	ANIMAL RIGHTS	OREGON WASHINGTON STATE LAND GRAB	PROHIBIT EMINENT DOMAIN	ALLOW OFFSHORE DRILLING	PROHIBIT RESERVATION SHOPPING FOR GAMBLING	PROTECT RANCHERS FROM WOLF PACKS	STOP TIMBER HARVEST INCREASE UNEMPLOYMENT	MASSIVE LAND ACQUISITION FUNDING	FREEDOM OF SPEECH	PROHIBIT EMINENT DOMAIN "HERITAGE AREAS"	DAMAGE THE MINING BUSINESS
		1 N	2 N	3 Y	4 Y	5 Y	6 Y	7 N	8 N	9 Y	10 Y	11 N
<b>California (Continued)</b>												
37 Millender-McDonald (D )	0%											
7 Miller, George (D )	0%	-	-	-	-	-	-	-	-	-	-	-
42 Miller, Gary (R )	100%	+	+	+	+	+	+	+	+	+	+	+
38 Napolitano (D )	8%	-	-	-	-	-	-	-	+	-	-	-
21 Nunes (R )	92%	+	+	+	+	+	+	+	+	+	+	+
8 Pelosi (D )												
19 Radanovich (R )	100%	+	+	+	+	+	+	+	+	+	+	+
37 Richardson (D )	0%											
46 Rohrabacher (R )	92%	+	+	+	+	+	+	+	+	+	+	+
34 Roybal-Allard (D )	8%	-	-	-	-	-	-	-	+	-	-	-
40 Royce (R )	75%	-	+	+	+	+	-	-	+	+	+	+
39 Sanchez, Linda (D )	0%	-	-	-	-	-	-	-	-	-	-	-
47 Sanchez, Loretta (D )	0%	-	-	-	-	-	-	-	-	-	-	-
29 Schiff (D )	0%	-	X	-	-	-	-	-	-	-	-	-
27 Sherman (D )	8%	-	-	-	-	-	-	-	+	-	-	-
32 Solis (D )	0%	-	-	-	-	-	-	-	-	-	-	-
12 Speier (D )	0%											
13 Stark (D )	0%	-	-	-	-	-	-	-	-	-	-	-
10 Tauscher (D )	0%	-	-	-	-	-	-	-	-	-	-	-
1 Thompson, M. (D )	0%	-	-	-	-	-	-	-	-	-	-	-
35 Waters (D )	0%	-	X	-	-	-	-	-	-	-	-	-
33 Watson (D )	0%	-	-	-	-	-	-	-	-	-	-	-
30 Waxman (D )	0%	-	-	-	-	-	-	-	X	-	-	-
6 Woolsey (D )	0%	-	-	-	-	-	-	-	-	-	-	-
<b>Colorado</b>												
1 DeGette (D )	8%	-	X	X	-	-	-	-	+	-	-	-
5 Lamborn (R )	100%	+	+	+	+	+	+	+	+	+	+	+
4 Musgrave (R )	92%	+	+	+	+	+	+	+	+	+	+	+
7 Perlmutter (D )	8%	-	-	-	-	-	-	-	+	-	-	-
3 Salazar, J. (D )	42%	+	-	-	+	-	+	+	+	-	-	-
6 Tancredo (R )	92%	+	+	+	+	+	+	+	+	X	+	+
2 Udall, M. (D )	8%	-	-	-	-	-	-	-	+	-	-	-
<b>Connecticut</b>												
2 Courtney (D )	8%	-	-	-	-	-	-	-	+	-	-	-
3 DeLauro (D )	0%	-	-	-	-	-	-	-	-	-	-	-
1 Larson, J. (D )	0%	-	-	-	-	-	-	-	-	-	-	-
5 Murphy, C. (D )	8%	-	-	-	-	-	-	-	+	-	-	-
4 Shays (R )	17%	-	-	X	-	+	-	-	+	-	-	-
<b>Delaware</b>												
AL Castle (R )	33%	-	-	+	-	+	-	-	+	+	-	-
<b>Florida</b>												
9 Bilirakis (R )	58%	-	-	+	-	+	-	-	+	+	+	+
2 Boyd, A. (D )	25%	+	-	-	-	-	-	+	-	+	-	-
3 Brown, C. (D )	8%	-	X	-	-	-	-	-	+	-	-	-
5 Brown-Waite, G. (R )	92%	+	+	+	-	+	+	+	+	+	+	+
13 Buchanan (R )	75%	-	+	+	-	+	+	-	+	+	+	+
11 Castor (D )	8%	-	-	-	-	-	-	-	+	-	-	-
4 Crenshaw (R )	75%	-	-	+	-	+	+	+	+	+	+	+
21 Diaz-Balart, L. (R )	58%	-	-	+	-	+	-	+	+	+	+	+
25 Diaz-Balart, M. (R )	67%	-	-	+	-	+	+	+	+	+	+	+
24 Feeney (R )	83%	X	+	+	-	+	+	+	+	+	+	+
23 Hastings, A. (D )	8%	-	-	-	-	-	-	-	+	-	-	-
8 Keller (R )	67%	-	-	+	-	+	-	+	+	+	+	+
22 Klein, R. (D )	0%	-	-	-	-	-	-	-	-	-	-	-
14 Mack (R )	92%	+	+	+	-	+	+	+	+	+	+	+

**PRIVATE PROPERTY CONGRESSIONAL VOTE INDEX**

**HOUSE KEY**  
 + Supported Private Property position  
 - Opposed Private Property position  
 X Did not vote (counts as negative)  
 I Ineligible to vote at the time

REPRESENTATIVE	% AGREED ALL VOTES LPPV POSITION:	ANIMAL RIGHTS	OREGON/WASHINGTON STATE LAND GRAB	PROHIBIT EMINENT DOMAIN	ALLOW OFFSHORE DRILLING	PROHIBIT RESERVATION SHOPPING FOR GAMBLING	PROTECT RANCHERS FROM WOLF PACKS	STOP TIMBER HARVEST INCREASE UNEMPLOYMENT	MASSIVE LAND ACQUISITION FUNDING	FREEDOM OF SPEECH	PROHIBIT EMINENT DOMAIN "HERITAGE AREAS"	DAMAGE THE MINING BUSINESS
		1 N	2 N	3 Y	4 Y	5 Y	6 Y	7 N	8 N	9 Y	10 Y	11 N
<b>Florida(Continued)</b>												
16 Mahoney (D)	17%	+	-	-	-	-	-	-	-	+	-	-
17 Meek, K. (D)	8%	-	-	-	X	-	-	-	-	+	-	-
7 Mica (R)	67%	-	-	+	+	+	+	+	+	+	+	+
1 Miller, J. (R)	83%	+	-	+	-	+	+	+	+	+	+	+
12 Putnam (R)	92%	+	+	+	-	+	+	+	+	+	+	+
18 Ros-Lehtinen (R)	58%	-	-	+	-	X	+	-	+	+	+	+
6 Stearns (R)	83%	+	+	+	-	+	+	-	+	+	+	+
20 Wasserman Schultz (D)	0%	-	-	-	-	-	-	-	-	-	-	-
15 Weldon (R)	92%	+	-	+	+	+	+	+	+	+	+	+
19 Wexler (D)	0%	-	-	-	-	-	-	-	-	-	-	-
10 Young, C.W. (R)	67%	-	+	+	-	+	+	-	+	+	+	-
<b>Georgia</b>												
12 Barrow (D)	33%	+	-	-	-	+	-	-	-	+	+	-
2 Bishop, S. (D)	17%	+	-	-	-	-	-	-	+	-	-	-
10 Broun (R)	100%	I	I	I	I	I	I	I	I	+	+	+
9 Deal (R)	92%	+	+	+	+	+	+	+	+	+	+	+
11 Gingrey (R)	83%	+	-	+	+	+	+	+	+	+	X	+
4 Johnson, H. (D)	0%	-	-	-	-	-	-	-	-	-	-	-
1 Kingston (R)	100%	+	+	+	+	+	+	+	+	+	+	+
5 Lewis, John (D)	0%	-	-	-	-	-	-	-	-	-	-	-
7 Linder (R)	92%	-	+	+	+	+	+	+	+	+	+	+
8 Marshall (D)	42%	+	-	-	+	+	-	-	+	+	-	-
10 Norwood (R)												
6 Price, T. (R)	92%	+	+	+	+	+	+	-	+	+	+	+
13 Scott, D. (D)	8%	-	-	-	-	-	-	-	+	-	-	-
3 Westmoreland (R)	92%	X	+	+	+	+	+	+	+	+	+	+
<b>Hawaii</b>												
1 Abercrombie (D)	17%	-	-	-	+	-	-	+	-	X	-	-
2 Hirono (D)	0%	-	-	-	-	-	-	-	-	-	-	-
<b>Idaho</b>												
1 Sali (R)	100%	+	+	+	+	+	+	+	+	+	+	+
2 Simpson (R)	83%	+	-	+	+	+	+	+	-	+	+	+
<b>Illinois</b>												
8 Bean (D)	17%	-	-	-	+	-	-	-	+	-	-	-
13 Biggert (R)	42%	-	-	+	-	+	-	-	+	+	-	-
12 Costello (D)	17%	-	X	-	-	+	-	-	+	+	-	-
7 Davis, Danny (D)	0%	-	-	-	-	-	-	-	-	-	-	-
5 Emanuel (D)	8%	-	-	-	-	-	-	-	+	-	-	-
14 Foster (D)	0%	I	I	I	I	I	I	I	I	I	I	I
4 Gutierrez (D)	0%	-	-	-	-	-	-	X	-	-	-	-
17 Hare (D)	8%	-	-	-	-	-	-	-	+	-	-	-
14 Hastert (R)	58%	+	-	+	+	+	+	+	X	+	-	X
2 Jackson, J. (D)	0%	-	-	-	-	-	-	-	-	-	-	-
15 Johnson, Timothy (R)	33%	-	X	+	-	+	-	-	+	+	-	-
10 Kirk (R)	25%	-	-	+	-	+	-	-	+	-	-	-
18 LaHood (R)	42%	+	-	+	-	+	-	+	X	X	-	+
3 Lipinski (D)	17%	-	-	-	-	+	-	-	+	-	-	-
16 Manzullo (R)	92%	+	-	+	+	+	+	+	+	+	+	+
6 Roskam (R)	67%	-	-	+	+	+	+	-	+	+	-	+
1 Rush (D)	8%	X	-	-	-	-	-	-	+	-	-	-
9 Schakowsky (D)	0%	-	-	-	-	-	-	-	-	-	-	-
19 Shimkus (R)	75%	+	X	+	+	+	+	-	+	+	-	+
11 Weller (R)	50%	-	-	+	+	+	-	+	+	+	-	X
<b>Indiana</b>												
5 Burton (R)	100%	+	+	+	+	+	+	+	+	+	+	+

**PRIVATE PROPERTY CONGRESSIONAL VOTE INDEX**

**HOUSE KEY**  
 + Supported Private Property position  
 - Opposed Private Property position  
 X Did not vote (counts as negative)  
 I Ineligible to vote at the time

REPRESENTATIVE	% AGREED ALL VOTES LPPV POSITION:	ANIMAL RIGHTS	OREGON WASHINGTON STATE LAND GRAB	PROHIBIT EMINENT DOMAIN	ALLOW OFFSHORE DRILLING	PROHIBIT RESERVATION SHOPPING FOR GAMBLING	PROTECT RANCHERS FROM WOLF PACKS	STOP TIMBER HARVEST INCREASE UNEMPLOYMENT	MASSIVE LAND ACQUISITION FUNDING	FREEDOM OF SPEECH	PROHIBIT EMINENT DOMAIN "HERITAGE AREAS"	DAMAGE THE MINING BUSINESS
		1 N	2 N	3 Y	4 Y	5 Y	6 Y	7 N	8 N	9 Y	10 Y	11 N
<b>Indiana (Continued)</b>												
4 Buyer (R)	92%	+	X	+	+	+	+	+	+	+	+	+
7 Carson (D)	8%	-	X	-	-	-	-	-	-	+	-	X
7 Carson, A. (D)	0%											
2 Donnelly (D)	17%	-	-	-	-	+	-	-	-	-	-	-
8 Ellsworth (D)	25%	+	-	-	-	+	-	-	-	+	-	-
9 Hill (D)	8%	-	-	-	-	-	-	-	-	+	-	-
6 Pence (R)	100%	+	+	+	+	+	+	+	+	+	+	+
3 Souder (R)	75%	+	X	+	+	+	+	+	+	+	-	+
1 Visclosky (D)	17%	-	-	-	+	-	-	-	-	+	-	-
<b>Iowa</b>												
3 Boswell (D)	25%	+	-	-	+	-	-	+	-	-	-	-
1 Braley (D)	0%	-	-	-	-	-	-	-	-	-	-	-
5 King, S. (R)	100%	+	+	+	+	+	+	+	+	+	+	+
4 Latham (R)	75%	+	-	+	+	+	+	+	+	+	-	+
2 Loeb sack (D)	0%	-	-	-	-	-	-	-	-	-	-	-
<b>Kansas</b>												
2 Boyda, N. (D)	25%	+	X	-	+	-	+	-	-	-	-	-
3 Moore, D. (D)	8%	-	-	-	-	-	-	-	+	-	-	-
1 Moran, Jerry (R)	75%	+	X	+	+	+	-	+	+	+	+	+
4 Tiahrt (R)	83%	+	X	+	+	+	+	+	-	+	+	+
<b>Kentucky</b>												
6 Chandler (D)	8%	-	-	-	-	-	-	-	+	-	-	-
4 Davis, G. (R)	50%	-	+	+	X	X	X	X	+	+	+	+
2 Lewis, R. (R)	100%	+	+	+	+	+	+	+	+	+	+	+
5 Rogers, H. (R)	75%	-	-	+	+	+	+	+	+	+	-	+
1 Whitfield (R)	58%	-	-	+	+	+	-	+	+	-	+	+
3 Yarmuth (D)	8%	-	-	-	-	-	-	-	+	-	-	-
<b>Louisiana</b>												
5 Alexander, R. (R)	67%	+	-	+	+	+	-	+	+	+	-	X
6 Baker (R)	92%	+	-	+	+	+	+	+	+	+	+	+
7 Boustany (R)	83%	+	-	+	+	+	+	+	+	+	-	+
6 Cazayoux (D)	0%											
2 Jefferson (D)	8%	-	X	-	+	-	-	-	-	-	-	-
1 Jindal (R)	75%	-	+	+	+	+	+	+	+	+	X	X
4 McCrery (R)	83%	+	-	+	+	+	+	+	+	+	-	+
3 Melancon (D)	25%	+	-	+	-	-	-	-	+	-	-	-
1 Scalise (R)	0%											
<b>Maine</b>												
1 Allen (D)	0%	-	-	-	-	-	-	-	-	-	-	-
2 Michaud (D)	8%	-	-	-	-	-	-	-	+	-	-	-
<b>Maryland</b>												
6 Bartlett (R)	67%	-	+	+	-	+	-	-	+	+	+	+
7 Cummings (D)	8%	-	X	-	-	-	-	-	-	+	-	-
1 Gilchrest (R)	8%	-	X	-	X	X	X	X	-	+	X	-
5 Hoyer (D)	0%	-	-	-	-	-	-	-	-	-	-	-
2 Ruppertsberger (D)	17%	-	-	-	-	-	-	+	-	+	-	-
3 Sarbanes (D)	17%	-	-	-	-	-	-	+	-	+	-	-
8 Van Hollen (D)	0%	-	-	-	-	-	-	-	-	-	-	-
4 Wynn (D)	0%	-	-	-	-	-	-	-	-	-	X	-
<b>Massachusetts</b>												
8 Capuano (D)	8%	-	X	-	-	-	-	-	+	-	-	-
10 Delahunt (D)	8%	-	-	-	-	-	-	-	+	-	-	-
4 Frank, B. (D)	0%	-	X	-	-	-	-	-	X	-	-	X
9 Lynch (D)	8%	-	-	-	-	-	-	-	-	+	-	-
7 Markey (D)	0%	-	-	-	-	-	-	-	-	-	-	-

**PRIVATE PROPERTY CONGRESSIONAL VOTE INDEX**

**HOUSE KEY**  
 + Supported Private Property position  
 - Opposed Private Property position  
 X Did not vote (counts as negative)  
 I Ineligible to vote at the time

REPRESENTATIVE	% AGREED ALL VOTES LPPV POSITION:	ANIMAL RIGHTS OREGON/WASHINGTON STATE LAND GRAB PROHIBIT EMINENT DOMAIN ALLOW OFFSHORE DRILLING PROHIBIT RESERVATION SHOPPING FOR GAMBLING PROTECT RANCHERS FROM WOLF PACKS STOP TIMBER HARVEST INCREASE UNEMPLOYMENT MASSIVE LAND ACQUISITION FUNDING FREEDOM OF SPEECH PROHIBIT EMINENT DOMAIN FEDERAL ZONING "HERITAGE AREAS" DAMAGE THE MINING BUSINESS											
		1 N	2 N	3 Y	4 Y	5 Y	6 Y	7 N	8 N	9 Y	10 Y	11 N	12 N
<b>Massachusetts (Continued)</b>													
3 McGovern (D)	0%	-	-	-	-	-	-	-	-	-	-	-	-
5 Meehan (D)	0%	-	-	-	-	-	-	-	-	-			
2 Neal (D)	0%	-	X	-	-	-	-	-	-	-	-	-	-
1 Olver (D)	0%	-	-	-	-	-	-	-	-	-	-	-	-
6 Tierney (D)	0%	-	-	-	-	-	-	-	-	X	-	-	-
5 Tsongas (D)	0%											-	-
<b>Michigan</b>													
4 Camp (R)	92%	+	X	+	+	+	+	+	+	+	+	+	+
14 Conyers (D)	0%	-	-	-	-	-	-	-	-	-	-	-	-
15 Dingell (D)	8%	+	-	-	-	-	-	-	-	-	-	-	-
3 Ehlers (R)	33%	-	-	+	-	+	-	-	+	+	-	-	-
2 Hoekstra (R)	100%	+	+	+	+	+	+	+	+	+	+	+	+
5 Kildee (D)	8%	-	-	-	-	-	-	-	-	+	-	-	-
13 Kilpatrick (D)	0%	-	X	-	-	-	-	-	-	-	-	-	-
9 Knollenberg (R)	83%	+	-	+	+	+	+	+	+	+	+	-	+
12 Levin, S. (D)	0%	-	-	-	-	-	-	-	-	-	-	-	-
11 McCotter (R)	75%	-	-	+	+	+	-	+	+	+	+	+	+
10 Miller, C. (R)	58%	+	-	+	+	-	-	-	+	+	+	-	+
8 Rogers, Mike (R)	83%	-	-	+	+	+	+	+	+	+	+	+	+
1 Stupak (D)	17%	-	-	X	-	-	-	+	-	+	-	-	-
6 Upton (R)	50%	-	-	+	+	+	-	-	+	+	-	-	+
7 Walberg (R)	92%	+	+	+	+	+	+	-	+	+	+	+	+
<b>Minnesota</b>													
6 Bachmann (R)	92%	+	+	+	+	-	+	+	+	+	+	+	+
5 Ellison (D)	0%	-	-	-	-	-	-	-	-	-	-	-	-
2 Kline, J. (R)	92%	+	+	+	+	-	+	+	+	+	+	+	+
4 McCollum (D)	0%	-	-	-	-	-	-	-	-	-	-	-	-
8 Oberstar (D)	25%	+	-	X	-	-	-	+	-	+	-	-	-
7 Peterson, C. (D)	58%	+	-	-	+	+	+	+	-	+	+	-	-
3 Ramstad (R)	33%	-	-	+	-	+	-	-	-	+	+	-	-
1 Walz (D)	17%	+	-	-	-	-	-	-	-	+	-	-	-
<b>Mississippi</b>													
1 Childers (D)	0%												
3 Pickering (R)	75%	+	-	+	+	+	X	+	+	+	+	-	+
4 Taylor (D)	33%	-	-	-	+	+	+	-	-	+	-	-	-
2 Thompson, B. (D)	0%	-	-	-	-	-	-	-	-	-	-	-	-
<b>Missouri</b>													
2 Akin (R)	83%	+	X	+	+	+	+	-	+	+	+	+	+
7 Blunt (R)	92%	+	-	+	+	+	+	+	+	+	+	+	+
3 Carnahan (D)	8%	-	-	-	-	-	-	-	-	+	-	-	-
1 Clay (D)	0%	-	-	-	-	-	-	X	-	-	-	-	-
5 Cleaver (D)	0%	-	-	-	-	-	-	-	-	-	-	-	-
8 Emerson (R)	83%	+	-	+	+	+	+	+	+	+	+	+	+
6 Graves (R)	92%	+	X	+	+	+	+	+	+	+	+	+	+
9 Hulshof (R)	83%	+	X	X	+	+	+	+	+	+	+	+	+
4 Skelton (D)	17%	-	-	-	+	-	-	-	-	+	-	-	-
<b>Montana</b>													
AL Rehberg (R)	83%	+	-	+	+	+	+	+	-	+	+	+	+
<b>Nebraska</b>													
1 Fortenberry (R)	58%	+	X	+	+	+	-	-	+	+	+	-	-
3 Smith, Adrian (R)	100%	+	+	+	+	+	+	+	+	+	+	+	+
2 Terry (R)	75%	+	-	+	+	+	+	-	+	+	+	-	+
<b>Nevada</b>													
1 Berkley (D)	17%	-	-	X	-	+	-	-	-	-	-	-	+
2 Heller (R)	83%	-	+	+	+	+	+	+	-	+	+	+	+



**PRIVATE PROPERTY CONGRESSIONAL VOTE INDEX**

**HOUSE KEY**  
 + Supported Private Property position  
 - Opposed Private Property position  
 X Did not vote (counts as negative)  
 I Ineligible to vote at the time

REPRESENTATIVE	% AGREED ALL VOTES LPPV POSITION:	ANIMAL RIGHTS OREGON/WASHINGTON STATE LAND GRAB PROHIBIT EMINENT DOMAIN ALLOW OFFSHORE DRILLING PROHIBIT RESERVATION SHOPPING FOR GAMBLING PROTECT RANCHERS FROM WOLF PACKS STOP TIMBER HARVEST INCREASE UNEMPLOYMENT MASSIVE LAND ACQUISITION FUNDING FREEDOM OF SPEECH PROHIBIT EMINENT DOMAIN FEDERAL ZONING "HERITAGE AREAS" DAMAGE THE MINING BUSINESS											
		1 N	2 N	3 Y	4 Y	5 Y	6 Y	7 N	8 N	9 Y	10 Y	11 N	12 N
<b>Nevada (Continued)</b>													
3 Porter (R)	67%	-	-	+	+	+	+	+	-	+	+	-	+
<b>New Hampshire</b>													
2 Hodes (D)	0%	-	-	-	-	-	-	-	-	-	-	-	-
1 Shea-Porter (D)	8%	-	-	-	-	-	-	-	-	+	-	X	-
<b>New Jersey</b>													
1 Andrews (D)	17%	-	-	-	-	+	-	-	-	+	-	-	-
7 Ferguson (R)	33%	-	-	+	-	+	-	-	-	+	+	-	-
11 Frelinghuysen (R)	33%	-	-	+	-	+	-	-	-	+	+	-	-
5 Garrett (R)	83%	+	+	+	X	+	+	-	+	+	+	+	+
12 Holt (D)	0%	-	-	-	-	-	-	-	-	-	-	-	-
2 LoBiondo (R)	33%	-	-	+	-	+	-	-	-	+	+	-	-
6 Pallone (D)	0%	-	-	-	-	-	-	-	-	-	-	-	-
8 Pascrell (D)	0%	-	-	-	-	-	-	-	-	-	-	-	-
10 Payne (D)	0%	-	-	-	X	X	X	X	-	-	-	-	-
9 Rothman (D)	8%	-	-	-	-	-	-	-	-	+	-	-	-
3 Saxton (R)	33%	-	-	+	-	+	-	-	-	+	+	-	-
13 Sires (D)	8%	-	-	-	-	-	-	-	-	+	-	-	-
4 Smith, C. (R)	33%	-	-	+	-	+	-	-	-	+	+	-	-
<b>New Mexico</b>													
2 Pearce (R)	83%	+	-	+	+	-	+	+	+	+	+	+	+
3 Udall, T. (D)	8%	-	-	-	-	-	-	-	-	+	-	-	-
1 Wilson, H. (R)	67%	-	-	+	+	+	+	+	-	+	+	-	+
<b>New York</b>													
5 Ackerman (D)	0%	-	-	-	-	-	-	-	-	-	-	-	X
24 Arcuri (D)	8%	-	-	-	-	+	-	-	-	-	-	-	-
1 Bishop, T. (D)	8%	-	-	-	-	-	-	-	-	+	-	-	-
11 Clarke (D)	0%	-	-	-	-	-	-	-	-	-	X	-	-
7 Crowley (D)	8%	-	X	-	-	-	-	-	-	+	-	-	-
17 Engel (D)	8%	X	X	-	-	-	-	-	-	+	-	-	-
13 Fossella (R)	75%	-	-	+	+	+	+	+	+	+	+	-	+
20 Gillibrand (D)	17%	-	-	-	-	-	-	-	-	+	+	-	-
19 Hall, J. (D)	0%	-	-	-	-	-	-	-	-	-	-	-	-
27 Higgins (D)	0%	-	-	-	-	-	-	-	-	-	-	-	-
22 Hinchey (D)	0%	-	X	-	-	-	-	-	-	-	-	-	-
2 Israel (D)	8%	-	X	-	-	-	-	-	-	+	-	-	-
3 King, P. (R)	67%	-	-	+	+	+	+	-	+	+	+	-	+
29 Kuhl (R)	67%	-	-	+	+	-	+	-	+	+	+	+	+
18 Lowey (D)	0%	-	-	-	-	-	-	-	-	-	-	-	-
14 Maloney (D)	0%	-	X	-	-	-	-	-	-	-	-	-	-
4 McCarthy, C. (D)	8%	-	-	-	-	-	-	-	-	+	-	-	-
23 McHugh (R)	58%	-	-	+	+	+	-	+	-	+	+	-	+
21 McNulty (D)	0%	X	-	-	-	-	-	-	-	X	-	-	X
6 Meeks, G. (D)	8%	-	-	-	-	-	-	-	-	+	-	-	-
8 Nadler (D)	0%	-	-	-	-	-	-	-	-	-	-	-	-
15 Rangel (D)	0%	-	-	-	-	-	-	-	-	-	-	-	-
26 Reynolds (R)	67%	-	-	+	+	-	+	+	+	+	+	-	+
16 Serrano (D)	17%	-	-	-	-	-	-	-	+	+	-	-	-
28 Slaughter (D)	0%	-	X	-	-	-	-	-	-	-	-	-	-
10 Towns (D)	0%	-	X	-	-	-	-	-	-	-	-	-	-
12 Velazquez (D)	0%	-	-	-	-	-	-	-	-	-	-	-	-
25 Walsh (R)	58%	-	-	+	+	+	-	+	-	+	+	-	+
9 Weiner (D)	8%	-	X	-	-	-	-	-	-	+	-	-	-
<b>North Carolina</b>													
1 Butterfield (D)	8%	-	-	-	-	-	-	+	-	-	-	-	X
6 Coble (R)	83%	+	-	+	+	+	+	-	+	+	+	+	+

**PRIVATE PROPERTY CONGRESSIONAL VOTE INDEX**

**HOUSE KEY**  
 + Supported Private Property position  
 - Opposed Private Property position  
 X Did not vote (counts as negative)  
 I Ineligible to vote at the time

REPRESENTATIVE	% AGREED ALL VOTES LPPV POSITION:	ANIMAL RIGHTS	OREGON WASHINGTON STATE LAND GRAB	PROHIBIT EMINENT DOMAIN	ALLOW OFFSHORE DRILLING	PROHIBIT RESERVATION SHOPPING FOR GAMBLING	PROTECT RANCHERS FROM WOLF PACKS	STOP TIMBER HARVEST INCREASE UNEMPLOYMENT	MASSIVE LAND ACQUISITION FUNDING	FREEDOM OF SPEECH	PROHIBIT EMINENT DOMAIN "HERITAGE AREAS"	DAMAGE THE MINING BUSINESS
		1 N	2 N	3 Y	4 Y	5 Y	6 Y	7 N	8 N	9 Y	10 Y	11 N
<b>North Carolina (Continued)</b>												
2 Etheridge (D )	8%	X	-	-	-	-	-	-	+	-	-	-
5 Foxx (R )	75%	-	+	+	+	+	-	-	+	+	+	+
8 Hayes (R )	75%	+	-	+	+	+	+	+	+	+	+	+
3 Jones, W. (R )	50%	-	-	-	+	+	-	+	+	+	+	-
10 McHenry (R )	100%	+	+	+	+	+	+	+	+	+	+	+
7 McIntyre (D )	8%	-	-	-	-	-	-	-	+	-	-	-
13 Miller, B. (D )	8%	-	-	-	-	-	-	-	+	-	-	-
9 Myrick (R )	75%	-	+	+	+	+	-	+	+	+	+	X
4 Price, D. (D )	0%	-	X	-	-	-	-	-	-	-	-	-
11 Shuler (D )	8%	-	X	-	-	-	-	-	+	-	-	X
12 Watt (D )	0%	-	-	-	-	-	-	-	-	-	-	-
<b>North Dakota</b>												
AL Pomeroy (D )	17%	+	-	-	-	-	-	-	+	-	-	-
<b>Ohio</b>												
8 Boehner (R )	92%	+	X	+	+	+	+	+	+	+	+	+
1 Chabot (R )	75%	-	+	+	+	+	-	+	+	+	+	+
5 Gillmor (R )	33%	+	-	X	-	+	-	-	+	+	I	I
7 Hobson (R )	58%	-	-	+	+	+	+	-	+	+	-	-
4 Jordan (R )	92%	+	+	+	+	+	-	+	+	+	+	+
9 Kaptur (D )	0%	-	-	-	-	-	-	-	-	-	-	X
10 Kucinich (D )	0%	-	-	-	-	-	-	-	-	-	-	-
14 LaTourette (R )	50%	-	-	+	+	+	-	-	+	+	-	+
5 Latta (R )	0%	I	I	I	I	I	I	I	I	I	I	I
15 Pryce, D. (R )	58%	-	X	+	+	+	+	-	+	+	-	+
16 Regula (R )	67%	+	-	+	+	+	+	-	+	+	-	-
17 Ryan, T. (D )	8%	-	-	-	-	-	-	-	+	-	-	-
2 Schmidt (R )	83%	-	+	+	+	+	+	+	+	+	+	+
18 Space (D )	42%	+	-	-	+	+	-	-	+	+	-	-
13 Sutton (D )	0%	-	-	-	-	-	-	-	-	-	-	-
12 Tiberi (R )	83%	-	+	+	+	+	-	+	+	+	+	+
11 Tubbs Jones (D )	0%	-	-	X	-	-	-	-	-	-	-	-
3 Turner (R )	75%	-	-	+	+	+	+	+	+	+	-	+
6 Wilson, Charlie (D )	8%	-	-	-	-	-	-	-	+	-	X	X
<b>Oklahoma</b>												
2 Boren (D )	67%	+	-	-	+	-	+	+	+	+	-	+
4 Cole (R )	75%	+	-	+	+	-	+	+	+	X	+	+
5 Fallin (R )	83%	+	-	+	+	-	+	+	+	+	+	+
3 Lucas (R )	83%	+	-	+	+	-	+	+	+	+	+	+
1 Sullivan (R )	83%	X	+	+	+	-	+	+	+	+	+	+
<b>Oregon</b>												
3 Blumenauer (D )	0%	-	-	-	-	-	-	-	-	-	-	-
4 DeFazio (D )	8%	-	-	-	-	+	-	-	-	-	-	-
5 Hooley (D )	8%	-	-	-	-	-	-	-	+	-	-	-
2 Walden (R )	75%	+	-	+	+	-	+	-	+	+	+	+
1 Wu (D )	0%	-	-	-	-	-	-	-	-	-	-	-
<b>Pennsylvania</b>												
4 Altmire (D )	33%	-	-	-	-	+	-	-	+	+	-	-
1 Brady, R. (D )	0%	-	X	-	-	-	-	-	-	-	-	-
10 Carney (D )	8%	-	-	-	-	+	-	-	-	-	-	-
15 Dent (R )	50%	-	-	+	+	+	-	-	+	+	-	+
14 Doyle (D )	8%	-	X	-	+	-	-	-	-	-	-	-
3 English (R )	42%	-	-	+	+	-	-	-	+	+	-	+
2 Fattah (D )	0%	X	X	-	-	-	-	-	-	-	-	-
6 Gerlach (R )	42%	-	-	+	+	+	-	-	+	+	-	-
17 Holden (D )	17%	-	X	-	+	-	-	-	+	-	-	-

**PRIVATE PROPERTY CONGRESSIONAL VOTE INDEX**

**HOUSE KEY**  
 + Supported Private Property position  
 - Opposed Private Property position  
 X Did not vote (counts as negative)  
 I Ineligible to vote at the time

REPRESENTATIVE	% AGREED ALL VOTES LPPV POSITION:	ANIMAL RIGHTS	OREGON WASHINGTON STATE LAND GRAB	PROHIBIT EMINENT DOMAIN	ALLOW OFFSHORE DRILLING	PROHIBIT RESERVATION SHOPPING FOR GAMBLING	PROTECT RANCHERS FROM WOLF PACKS	STOP TIMBER HARVEST INCREASE UNEMPLOYMENT	MASSIVE LAND ACQUISITION FUNDING	FREEDOM OF SPEECH	PROHIBIT EMINENT DOMAIN "HERITAGE AREAS"	DAMAGE THE MINING BUSINESS
		1 N	2 N	3 Y	4 Y	5 Y	6 Y	7 N	8 N	9 Y	10 Y	11 N
<b>Pennsylvania (Continued)</b>												
11 Kanjorski (D )	17%	-	-	-	+	-	-	-	+	-	-	-
8 Murphy, P. (D )	17%	-	-	-	-	+	-	-	-	+	-	-
18 Murphy, T. (R )	58%	-	-	+	+	+	-	-	-	+	-	+
12 Murtha (D )	8%	-	X	-	+	-	-	-	-	-	-	-
5 Peterson, J. (R )	75%	+	X	+	+	+	+	-	+	+	-	+
16 Pitts (R )	83%	-	X	+	+	+	+	+	+	+	+	+
19 Platts (R )	42%	-	-	+	+	-	-	-	+	+	-	-
13 Schwartz (D )	17%	-	-	-	+	-	-	-	+	-	-	-
7 Sestak (D )	0%	-	-	X	-	-	-	-	-	-	-	-
9 Shuster (R )	83%	+	-	+	+	+	+	+	+	+	-	+
<b>Rhode Island</b>												
1 Kennedy, P. (D )	0%	-	-	-	-	-	-	-	-	-	-	-
2 Langevin (D )	8%	-	-	-	-	+	-	-	-	-	-	-
<b>South Carolina</b>												
3 Barrett (R )	75%	-	+	+	+	+	-	+	+	+	-	+
1 Brown, H. (R )	75%	+	-	+	+	+	-	+	+	+	-	+
6 Clyburn (D )	0%	X	-	-	-	-	-	-	-	-	-	-
4 Inglis (R )	67%	+	-	-	+	+	-	+	+	+	-	+
5 Spratt (D )	8%	X	-	-	-	-	-	-	+	-	-	-
2 Wilson, J. (R )	75%	-	-	+	+	+	+	+	+	+	-	+
<b>South Dakota</b>												
AL Herseth Sandlin (D )	25%	-	-	-	+	-	-	-	+	-	-	+
<b>Tennessee</b>												
7 Blackburn (R )	92%	+	+	+	+	+	-	+	+	+	+	+
9 Cohen (D )	0%	-	-	-	-	-	-	-	X	-	-	-
5 Cooper (D )	25%	-	-	-	+	+	-	-	+	-	X	-
1 Davis, David (R )	75%	+	-	+	+	+	-	+	+	+	-	+
4 Davis, L. (D )	25%	-	-	+	+	+	-	-	+	+	-	-
2 Duncan (R )	92%	-	+	+	+	+	+	+	+	+	+	+
6 Gordon (D )	25%	-	-	-	+	+	-	-	+	-	-	-
8 Tanner (D )	25%	-	-	-	+	+	-	-	+	-	-	-
3 Wamp (R )	83%	-	+	+	+	+	+	+	+	+	-	+
<b>Texas</b>												
6 Barton (R )	100%	+	+	+	+	+	+	+	+	+	+	+
8 Brady, K. (R )	83%	+	-	+	+	+	+	+	+	+	-	+
26 Burgess (R )	67%	-	-	+	+	+	+	+	+	+	-	X
31 Carter (R )	100%	+	+	+	+	+	+	+	+	+	+	+
11 Conaway (R )	100%	+	+	+	+	+	+	+	+	+	+	+
28 Cuellar (D )	25%	+	-	-	+	-	-	-	+	-	-	-
7 Culberson (R )	83%	+	X	+	+	+	+	+	+	+	X	+
25 Doggett (D )	0%	-	-	-	-	-	-	-	-	-	-	-
17 Edwards, C. (D )	25%	+	-	-	+	-	-	+	+	-	-	-
1 Gohmert (R )	92%	+	+	+	+	+	+	+	+	+	+	X
20 Gonzalez (D )	8%	X	-	+	-	-	-	-	-	-	-	-
12 Granger (R )	92%	+	-	+	+	+	+	+	+	+	+	+
9 Green, A. (D )	8%	-	-	-	+	-	-	-	-	-	-	-
29 Green, G. (D )	17%	-	-	-	+	-	-	-	+	-	-	-
4 Hall, R. (R )	83%	-	-	+	+	+	+	+	+	+	+	+
5 Hensarling (R )	83%	+	+	+	+	+	-	+	+	+	+	X
15 Hinojosa (D )	17%	+	-	-	+	-	-	-	X	-	-	-
18 Jackson Lee (D )	8%	-	-	-	-	-	-	-	+	-	-	-
3 Johnson, S. (R )	92%	+	+	+	+	+	+	+	+	X	+	+
30 Johnson, E. (D )	0%	X	X	-	-	-	-	-	-	-	X	-
22 Lampson (D )	33%	X	-	-	+	-	-	-	+	+	-	-
24 Marchant (R )	75%	-	X	+	+	+	+	+	+	+	X	+

**PRIVATE PROPERTY CONGRESSIONAL VOTE INDEX**

**HOUSE KEY**  
 + Supported Private Property position  
 - Opposed Private Property position  
 X Did not vote (counts as negative)  
 I Ineligible to vote at the time

REPRESENTATIVE	% AGREED ALL VOTES LPPV POSITION:	ANIMAL RIGHTS	OREGON/WASHINGTON STATE LAND GRAB	PROHIBIT EMINENT DOMAIN	ALLOW OFFSHORE DRILLING	PROHIBIT RESERVATION SHOPPING FOR GAMBLING	PROTECT RANCHERS FROM WOLF PACKS	STOP TIMBER HARVEST INCREASE UNEMPLOYMENT	MASSIVE LAND ACQUISITION FUNDING	FREEDOM OF SPEECH	PROHIBIT EMINENT DOMAIN "HERITAGE AREAS"	DAMAGE THE MINING BUSINESS	
		1 N	2 N	3 Y	4 Y	5 Y	6 Y	7 N	8 N	9 Y	10 Y	11 N	12 N
<b>Texas (Continued)</b>													
10 McCaul (R )	83%	+	-	+	+	+	+	-	+	+	+	+	+
19 Neugebauer (R )	100%	+	+	+	+	+	+	+	+	+	+	+	+
27 Ortiz (D )	0%	-	-	-	X	X	X	X	X	-	-	-	-
14 Paul (R )	83%	+	+	+	+	+	+	-	+	+	+	+	X
2 Poe (R )	83%	+	+	+	+	+	+	-	+	+	+	-	+
16 Reyes (D )	25%	-	-	-	+	-	-	+	-	-	X	-	-
23 Rodriguez (D )	17%	X	-	-	+	-	-	-	-	+	-	-	-
32 Sessions, P. (R )	50%	+	+	+	X	X	X	X	X	X	+	+	+
21 Smith, L. (R )	92%	+	-	+	+	+	+	+	+	+	+	+	+
13 Thornberry (R )	100%	+	+	+	+	+	+	+	+	+	+	+	+
<b>Utah</b>													
1 Bishop, R. (R )	100%	+	+	+	+	+	+	+	+	+	+	+	+
3 Cannon (R )	92%	X	+	+	+	+	+	+	+	+	+	+	+
2 Matheson (D )	58%	+	-	-	+	+	+	-	+	+	+	-	-
<b>Vermont</b>													
AL Welch (D )	0%	-	-	-	-	-	-	-	-	-	-	-	-
<b>Virginia</b>													
9 Boucher (D )	8%	-	-	-	-	-	-	-	+	-	-	-	-
7 Cantor (R )	92%	+	+	+	+	+	+	+	+	+	+	-	+
1 Davis (R )	0%	X	X	X	X	X	X	X	X	X	X	I	I
11 Davis, T. (R )	50%	-	-	+	+	+	-	-	+	+	+	-	X
2 Drake (R )	100%	+	+	+	+	+	+	+	+	+	+	+	+
4 Forbes (R )	75%	-	-	+	+	+	+	+	+	X	+	+	+
5 Goode (R )	83%	-	X	+	+	+	+	+	+	+	+	+	+
6 Goodlatte (R )	100%	+	+	+	+	+	+	+	+	+	+	+	+
8 Moran, James (D )	0%	-	-	-	-	-	-	-	-	-	-	-	-
3 Scott, R. (D )	0%	-	-	-	-	-	-	-	-	-	-	-	-
1 Wittman (R )	0%	I	I	I	I	I	I	I	I	I	I	I	I
10 Wolf (R )	50%	-	-	+	+	+	-	-	+	+	-	+	+
<b>Washington</b>													
3 Baird (D )	0%	-	-	-	-	-	-	-	-	-	-	-	-
6 Dicks (D )	8%	-	X	-	-	-	-	-	-	+	-	-	-
4 Hastings, D. (R )	100%	+	+	+	+	+	+	+	+	+	+	+	+
1 Inslee (D )	8%	-	X	-	-	-	-	-	-	+	-	-	-
2 Larsen, R. (D )	8%	-	-	-	-	-	-	-	-	-	-	-	-
7 McDermott (D )	0%	-	-	-	-	-	-	-	-	-	-	-	-
5 McMorris Rodgers (R )	75%	+	X	X	+	-	+	+	+	+	+	+	+
8 Reichert (R )	33%	-	X	+	-	+	-	-	-	+	+	-	-
9 Smith, Adam (D )	8%	-	-	-	-	-	-	-	-	+	-	-	-
<b>West Virginia</b>													
2 Capito (R )	67%	-	-	+	+	+	+	-	+	+	+	-	+
1 Mollohan (D )	25%	-	-	-	+	-	-	+	-	+	-	-	-
3 Rahall (D )	8%	-	-	-	-	-	-	-	-	+	-	-	-
<b>Wisconsin</b>													
2 Baldwin (D )	0%	-	-	-	-	-	-	-	-	-	-	-	-
8 Kagen (D )	8%	-	-	-	-	-	-	-	-	+	-	-	-
3 Kind (D )	25%	+	-	-	+	-	-	-	-	+	-	-	-
4 Moore, G. (D )	0%	-	-	-	-	-	-	-	-	-	-	-	-
7 Obey (D )	8%	-	-	-	-	-	-	-	-	+	-	-	-
6 Petri (R )	67%	+	-	+	-	+	-	+	+	+	+	+	-
1 Ryan, P. (R )	75%	+	+	+	+	+	-	+	+	+	+	+	-
5 Sensenbrenner (R )	83%	+	+	+	+	+	-	+	+	+	+	+	-
<b>Wyoming</b>													
AL Cubin (R )	75%	X	X	+	+	+	+	+	+	+	+	+	X

**The 2007 Private Property Congressional  
Vote Index is co-sponsored by:**

*Alaska Miners Association  
American Borate Company  
American Forest Resource Council  
American Land Rights Association  
American Policy Center  
Associated Industries of Vermont  
Associated Oregon Loggers  
Bates Construction  
Black Hills Multiple Use Coalition  
Brizard Company  
Brubaker-Mann Incorporated  
Buchanan Hardwoods, Incorporated  
Bunker Hill Mine  
Burgess Logging  
Cable Hardwoods, Incorporated  
California Forestry Association  
California Women in Timber, Siskiyou Chapter  
Central Texas Taxpayers Association  
Chuckwalla Mountain Desert Rats  
Citizens for Constitutional Property Rights  
Cochran-Zandi Lumber Company  
Communities for a Great Northwest  
Constitution Political Action Committee  
Cox Ranch  
Crooked Lake Northshore Association  
Davis Mountains Trans-Pecos Heritage Association  
Double R Properties  
Eastern Oregon Mining Association  
Family Water Alliance  
Fire Island National Seashore Advisory Board  
Forest Landowners Association Incorporated  
Fur Commission USA  
Gulf Lumber Company  
Hammond Ranches  
Herron Lumber Incorporated  
Hill Country Heritage Association  
J & J Forest Products Incorporated  
Landowners Association of North Dakota  
Lejabeach.com  
Lumbermen's Association of Texas  
Lynch Brothers  
MacMullin Forestry & Logging  
Multiple Use Association  
Multiple-Use Land Alliance  
National Inholders Association  
Nevada Farm Bureau  
New Mexico Woolgrowers Action Committee  
Northwest Council of Governments  
Oregonians for Food & Shelter  
Papco Incorporated  
Parsons Ranch Company  
People for the Constitution  
Pine River Lumber Company Ltd.  
Potlatch Corporation  
Prescott Livestock Auction  
Professional Agri Service  
Property Owners Standing Together (POST)  
Property Rights Foundation of America  
Quail's Nest Industries  
RSG Forest Products Incorporated  
Resource Development Council  
Robinson & Sons  
San Joaquin County Citizens Land Alliance  
Simpson Resource Company  
South Dakota Women in Timber, Black Hills Chapter  
Take Care/Sierra Forest Products  
Texas Wildlife Association  
The Conservative Caucus Foundation  
Trans Texas Heritage Association  
V-Cross Cattle/Open N Cattle  
Virginians for Property Rights  
Warren Land & Development Incorporated  
Washington Contract Loggers Association  
Washington County Alliance  
Washington Property Rights Alliance  
Western States Ground Water Alliance  
William Tripp Ranch*

**Individuals:**  
*Dirk Anderson  
Richard Broders  
Rogan Coombs  
Terry Cooper  
Robert & Joyce Covey  
Jay Cox  
Velda Dickey  
Roy Doner  
Becky Norton Dunlop  
Peter & Mary Jane Ehrman  
J. Roger Friedman  
Ben Gardner  
Betty Gibson  
Jack & Jane Hearn  
Jack Hoag  
Anthony Intiso  
John & Patricia King  
William E. Lindsey  
Edith Romey  
Tom Strider  
Barbara Veale  
Gordon Ziesing*

**Add your name or your Company name to this list!!**

**Call: 360-687-2471 — Fax: 360-687-2973 or**

**Email: [lppv@pacifier.com](mailto:lppv@pacifier.com)**

**More co-sponsors are signing up every day. See next page for details.**

**PRIVATE PROPERTY CONGRESSIONAL VOTE INDEX  
SPONSORSHIP ACCEPTANCE FORM**

- YES, I wish to sponsor the **Private Property Congressional Vote Index**. Here is my \$100 to become an official sponsor.
- Enclosed is \$35 for membership in the **League of Private Property Voters**. I understand I will receive various alerts and publications to keep me informed about government land acquisition, United Nations, Federal and state land use controls, wetlands, Endangered Species Act and other private property issues.
- I cannot be a co-sponsor of the Index at this time. However, I really like the Vote Index. Here's a contribution to help mail the Index to more people.

\$500\_\_\_\_\_ \$200\_\_\_\_\_ \$100\_\_\_\_\_ Other \$\_\_\_\_\_

NAME\_\_\_\_\_ ORGANIZATION (if any)\_\_\_\_\_

ADDRESS\_\_\_\_\_

CITY\_\_\_\_\_ STATE\_\_\_\_\_ ZIP\_\_\_\_\_

TELEPHONE\_\_\_\_\_ FAX\_\_\_\_\_

E-MAIL\_\_\_\_\_ WEBSITE\_\_\_\_\_

Please contact the organization below about being a co-sponsor of the Private Property Vote Index.

Organization\_\_\_\_\_

Contact Name\_\_\_\_\_ Phone Number\_\_\_\_\_

Please mail with your check payable to:



**LEAGUE OF PRIVATE PROPERTY VOTERS**  
**PO Box 423**  
**Battle Ground, WA 98604**  
**(360) 687-2471**  
**Fax (360) 687-2973**  
**email: [lppv@pacifier.com](mailto:lppv@pacifier.com)**